
Independent Children's Monitor



Independent Children's Monitor June 2020 Newsletter

Hi <<First Name>>

Kia ora koutou and welcome to the June 2020 update from the Independent Children's Monitor. Next week marks one year since the Monitor was established and we'd like to thank you all for your ongoing support, advice, guidance and commitment to helping us ensure that agencies who look after our tamariki and rangatahi are doing what they need to, to enable them to reach their potential and thrive.

What we've been up to

With all the "zooming" we've been doing and seeing our friends and colleagues on our screens, we thought we'd try something a little different this month and **send you a video update.**

Outcomes Framework

We've published our Outcomes Framework, which represents our perspective of what matters for tamariki, rangatahi and whānau in the Oranga Tamariki system, now and into the future. We have taken an outcomes-based approach and holistic te ao Māori lens towards the development of the Framework. It draws upon the Government's six wellbeing outcomes from the Child and Youth Wellbeing Strategy and incorporates key dimensions from the Whānau Ora Outcomes Framework and the Oranga Tamariki Outcomes Framework.

The Framework will initially be used to measure outcomes for tamariki and rangatahi in relation to the delivery of the National Care Standards and provides:

- assurance that tamariki and rangatahi in the care and custody of the state are being appropriately cared for against the NCS Regulations
- an indication that positive outcomes for tamariki, rangatahi and whānau wellbeing are being achieved.

[View the Outcomes Framework here.](#)

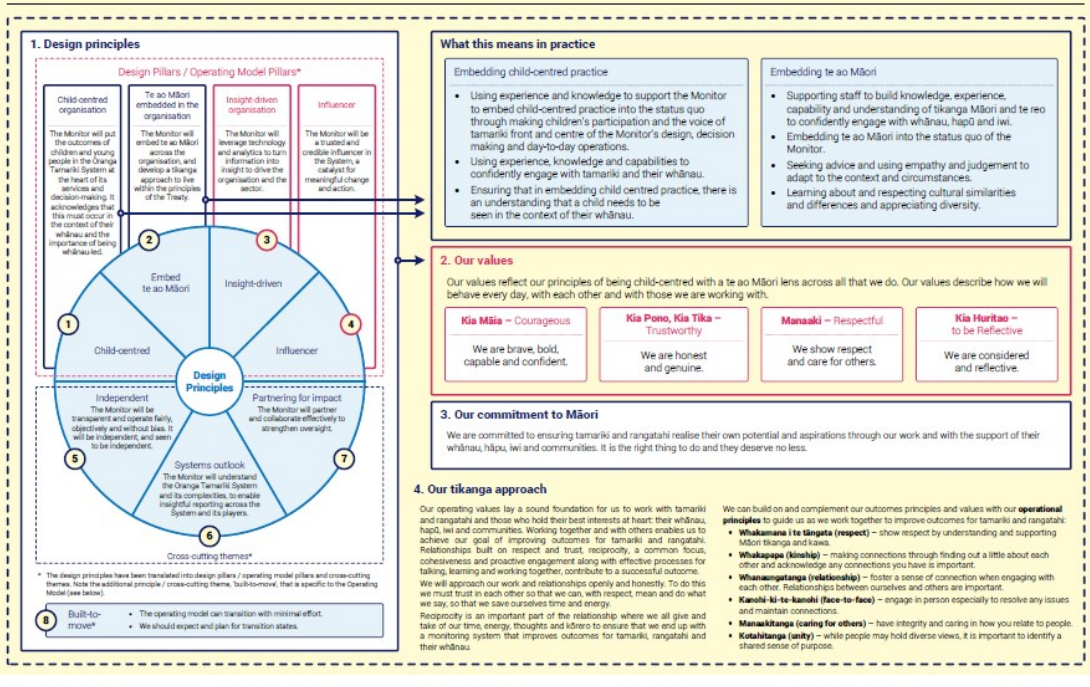
Relationship Management Model

Our Relationship Management Model supports our monitoring activity and engagement. There are four key components that drive and underpin this model and broader engagement:

- our design principles
 - child-centred
 - embedding te ao Māori
 - insight-driven
 - influencer
 - independent
 - partnering for impact and systems outlook
 - built to move
- our values
 - kia māiā – courageous
 - kia pono, kia tika – trustworthy
 - manaaki – respectful
 - kia huritao – to be reflective
- our commitment to Māori
- our tikanga approach.

[View the Relationship Management Model here.](#)

The four key components that drive and underpin our relationship management model and broader engagement



Regional hui engagement

Following our regional hui earlier this year, a survey was sent out to those who said they wanted to be involved in our future mahi. This was to help us understand how they would like to contribute to the important mahi underway. Thank you to those who indicated interest in being involved. We are currently planning our next phase of regional engagement and will be in touch.

If you didn't get a chance to fill in a feedback form at the regional hui or complete our survey and would like to be involved and contribute we welcome your input, contact us at info@icm.org.nz.

Ngā mihi nui
Arran Jones
Executive Director
Independent Children's Monitor



Copyright © 2020 Independent Children's Monitor, All rights reserved.

Want to change how you receive these emails?
You can [update your preferences](#) or [unsubscribe from this list](#).